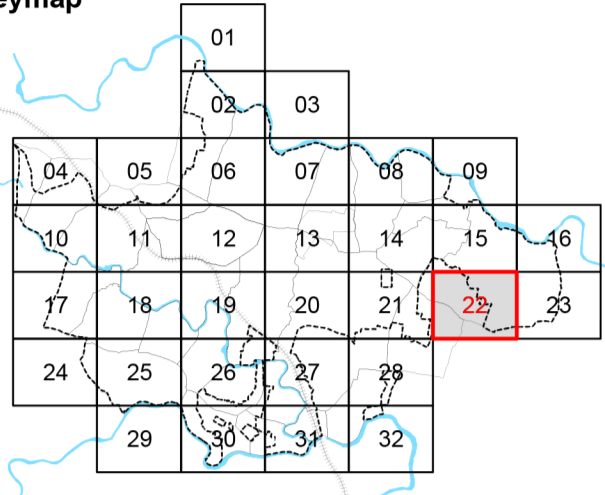


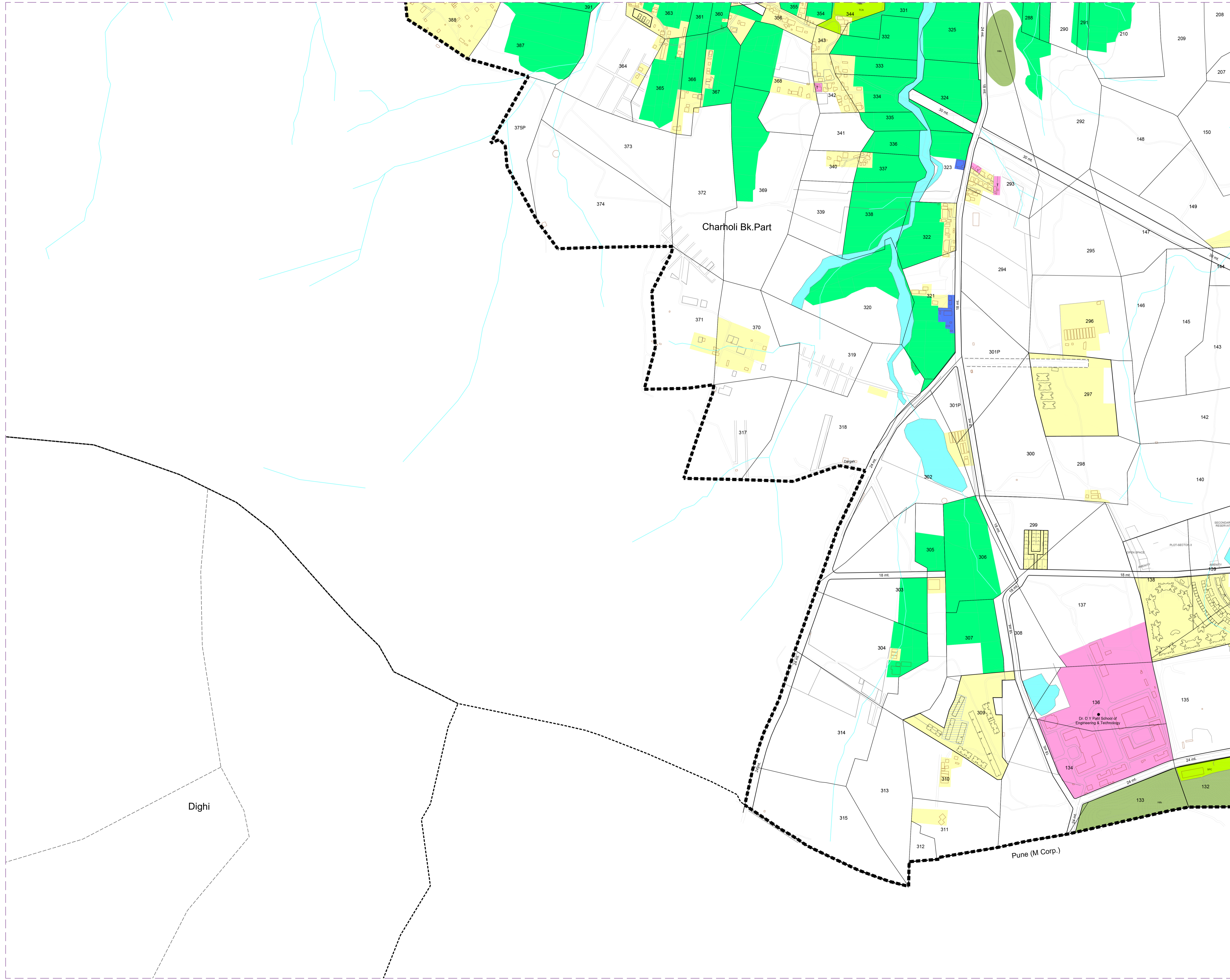
Village :- Charholi Bk.

Sheet No.- 22

Keymap



- Note:
1. For legend refer Key map
 2. The references used for the Preparation of the entire Final Existing Land Use Map has been mentioned in the Key Map Notes.



Prepared by	Checked by
 Project Draftsman (HCPDPM)	 Jr. Draftsman PCMC & SPA DP Unit
 Project Planner (HCPDPM)	 Jr. Draftsman PCMC & SPA DP Unit
Verified by	
 Asst. Town Planner PCMC & SPA DP Unit	
 Asst. Town Planner PCMC & SPA DP Unit	 Town Planner PCMC & SPA DP Unit

V. B. SHENDE
Deputy Director of Town Planning
PCMC & SPA DP Unit

(Rajesh Patil)
Commissioner
Pimpri - Chinchwad Municipal Corporation
Pimpri, Pune 411018, Maharashtra, INDIA.

Pimpri Chinchwad Municipal Corporation
Pimpri, Pune 411018, Maharashtra, INDIA.

HCP Design, Planning & Management Pvt. Ltd.
Paritosh, Usmanpura, Ahmedabad 380 013, Gujarat, INDIA.